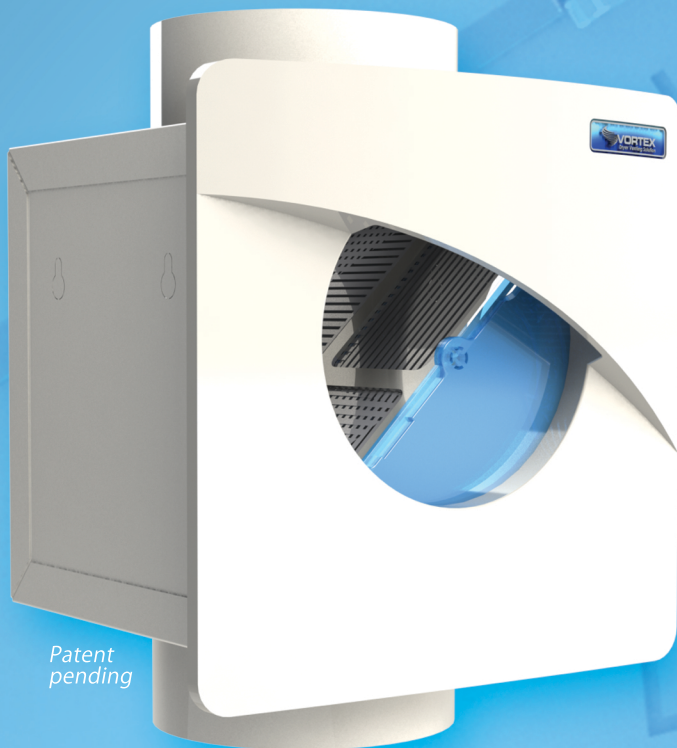


Lint Trap LT4E

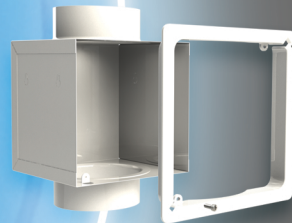
Empowered by Innovation



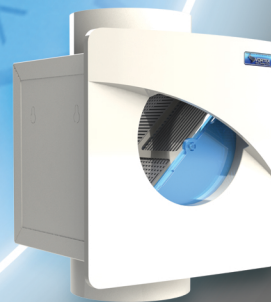
Patent pending



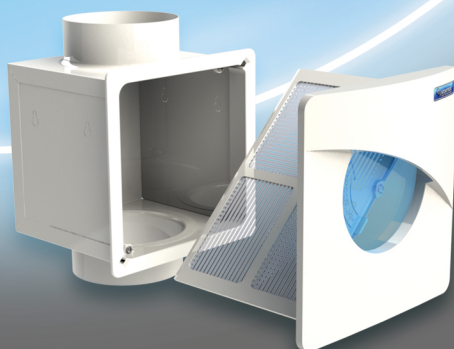
- Powder coated 24Ga galvanized steel box with 4" adapters.



- Fast and easy installation with finishing frame.



- 4" Sliding window allowing energy savings from the recovery of clean, heated and humid air during cold season.



- LTE4 box is equipped with a screen that filters the air that feeds into the dryer exhaust fan. The screen catches any airborne lint in the ductwork that isn't caught by the dryer's lint screen.

The less lint accumulation, the better your dryer performs.

Airborne lint from your home's dryer may accumulate in the exhaust duct causing clogging issues. Lint in the ductwork can quickly become a serious fire hazard. The secondary Lint trap installed between the dryer and the dryer exhaust ventilator filters the air, catches the lint and protects the exhaust fan and ductwork.



www.atmosphere.com